

Artemide GB Limited
106 Great Russell Street
London
WC1B 3NB

<http://www.artemide.com>

Sales Engineer
Peter Price
07831 504913
pprice.artemide@talk21.com

Lighting Designer/ Technical
Glenn Castle
020 7291 3865
gcastle@artemide.co.uk



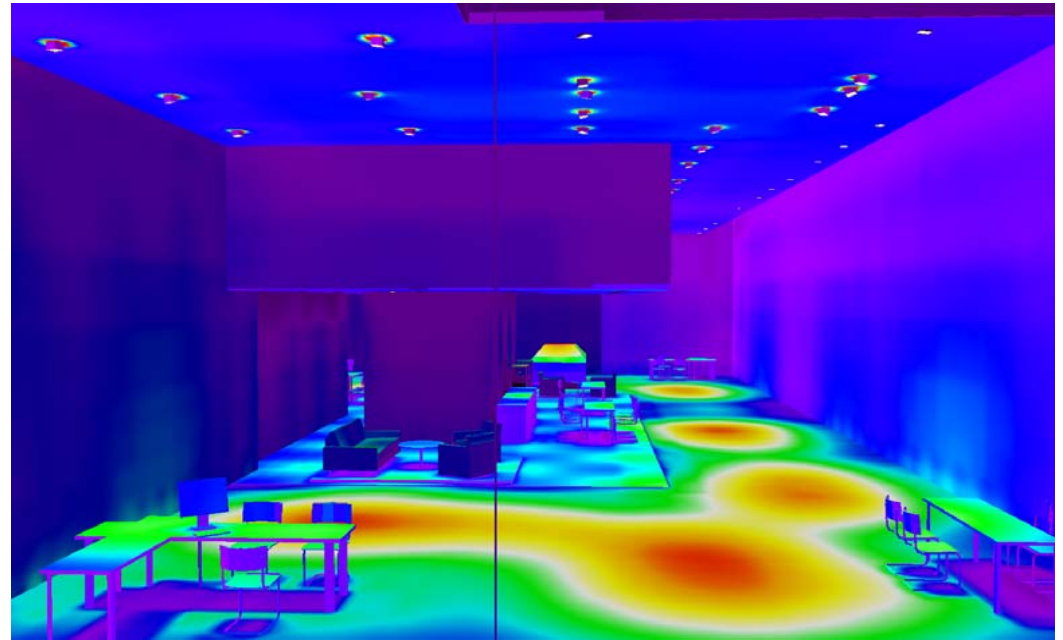
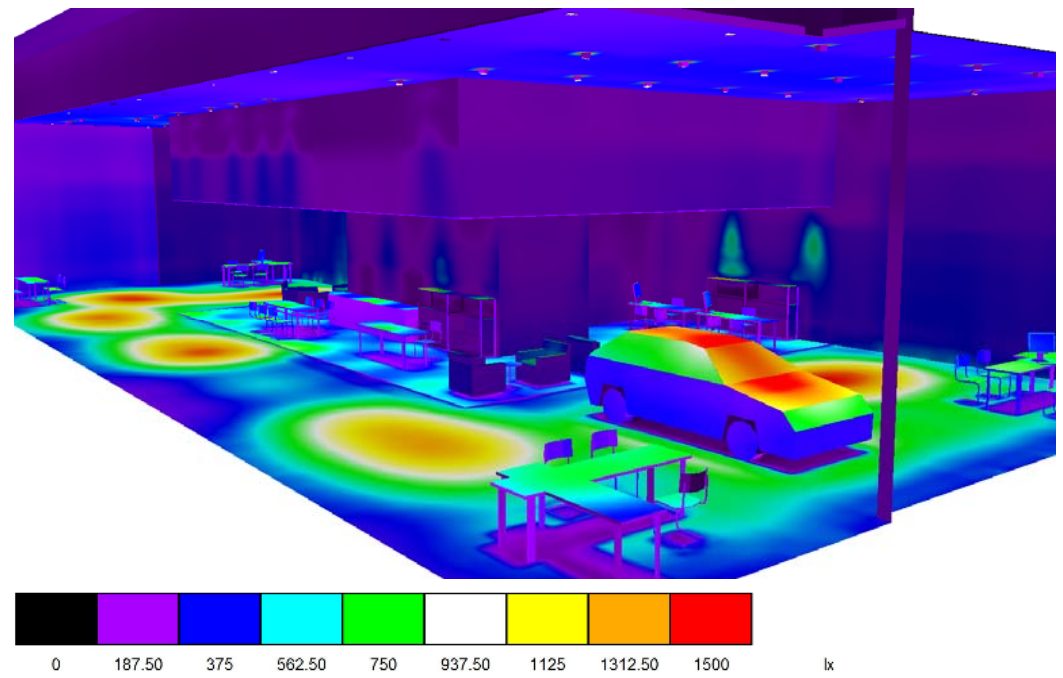


- Showroom- Individual Offices
- The Living Room- Lounge
- The Street- Sales Desk
- The Living Room- Service Reception
- The Street- Car Display
- The Living Room- Reception
- LED Strip to bulkhead



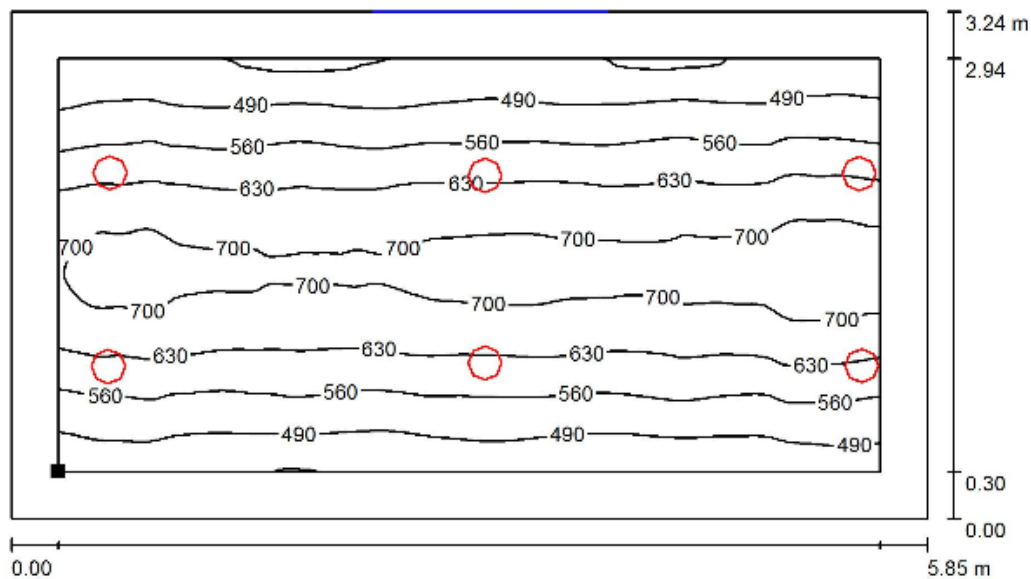
Interior Plan

Artemide



Calculation overview

Artemide

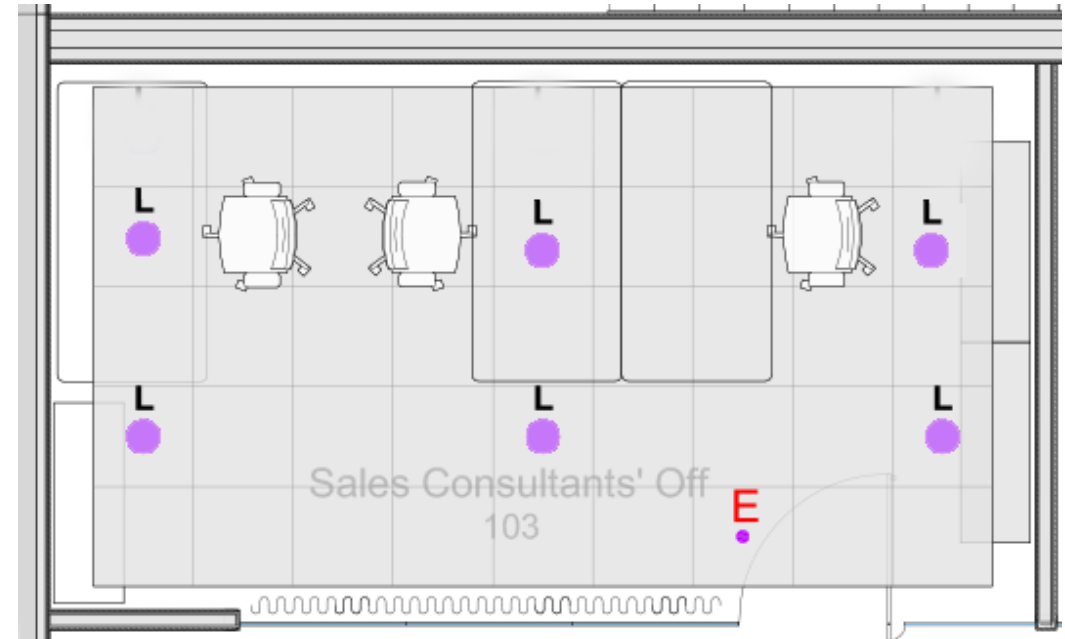


Individual Office- Design Parameters

- Level of illumination to be 500 lux at desk height.
- Colour Temperature to be 3000K.
- Fittings to be generally recessed circular downlights with white bezel.

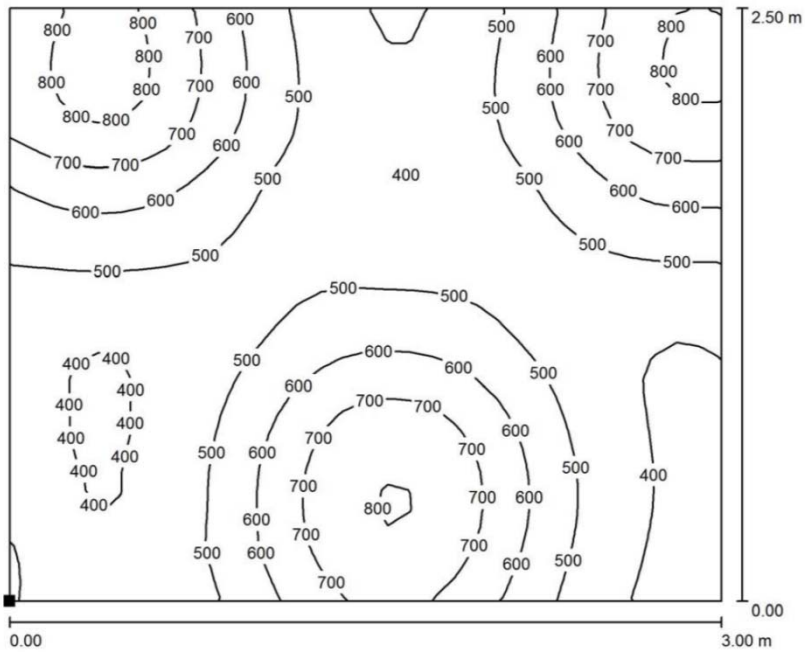


M244020 Luceri 26W LED,
3000K, 70° beam
Lumen output 2437 lm, LOR 0.81
Faceted mirror optics



Showroom- Individual Offices

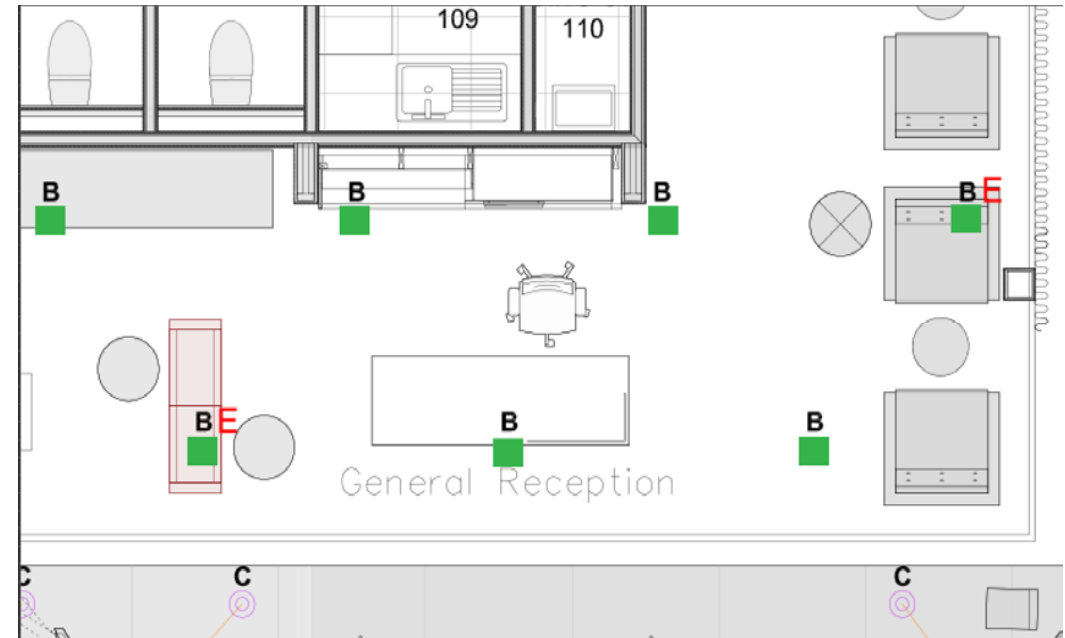
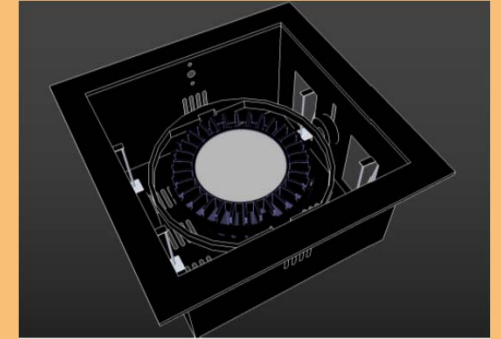
Artemide



Reception- Design Parameters

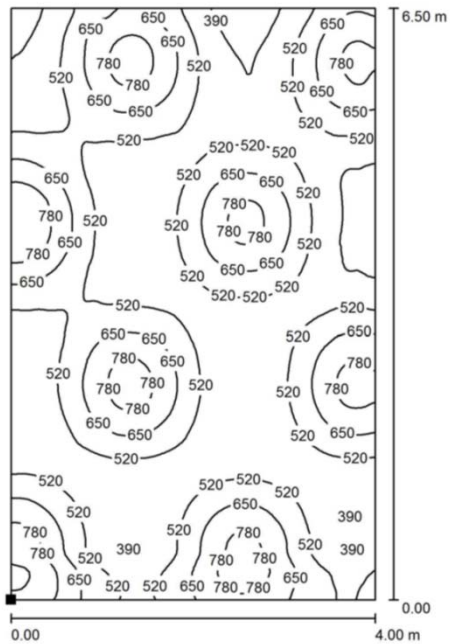
- Level of illumination to be 500 lux at desk height.
- Colour Temperature to be 3000K.
- Fittings to be recessed in wooden slated ceiling

Special manufacture for Volvo specialist wooden slated ceiling. 44W LED, 3000K, 40° beam, Lumen output 4100 lm,



The Living Room- Reception

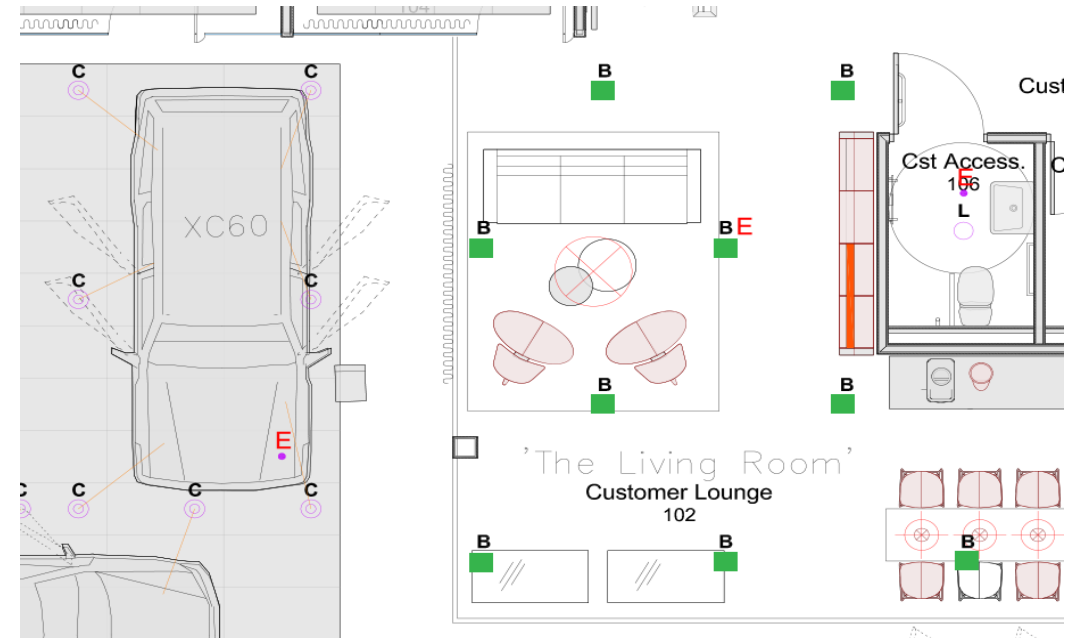
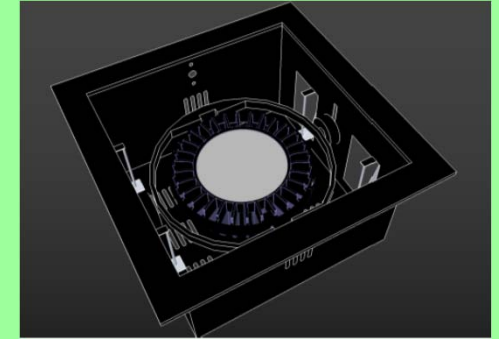
Artemide



Lounge- Design Parameters

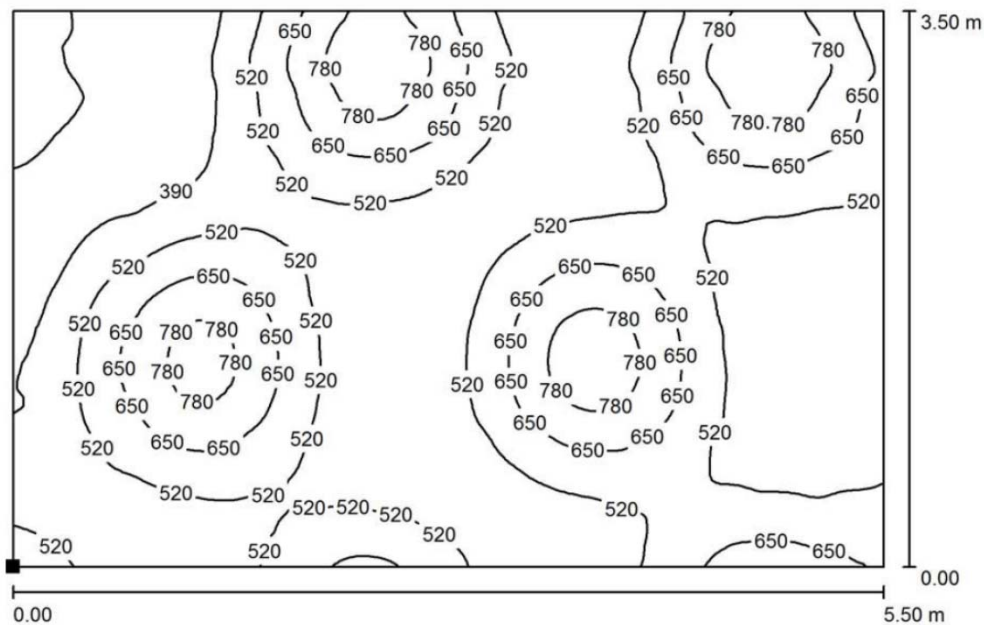
- Level of illumination to be 300-400 lux
- Colour Temperature to be 3000K.
- Allow for ceiling rose and circuitry to suit large and suspended pendants to café, bar and lounge areas.

Special manufacture for Volvo specialist wooden slated ceiling. 44W LED, 3000K, 40° beam, Lumen output 4100 lm,



The Living Room- Lounge

Artemide

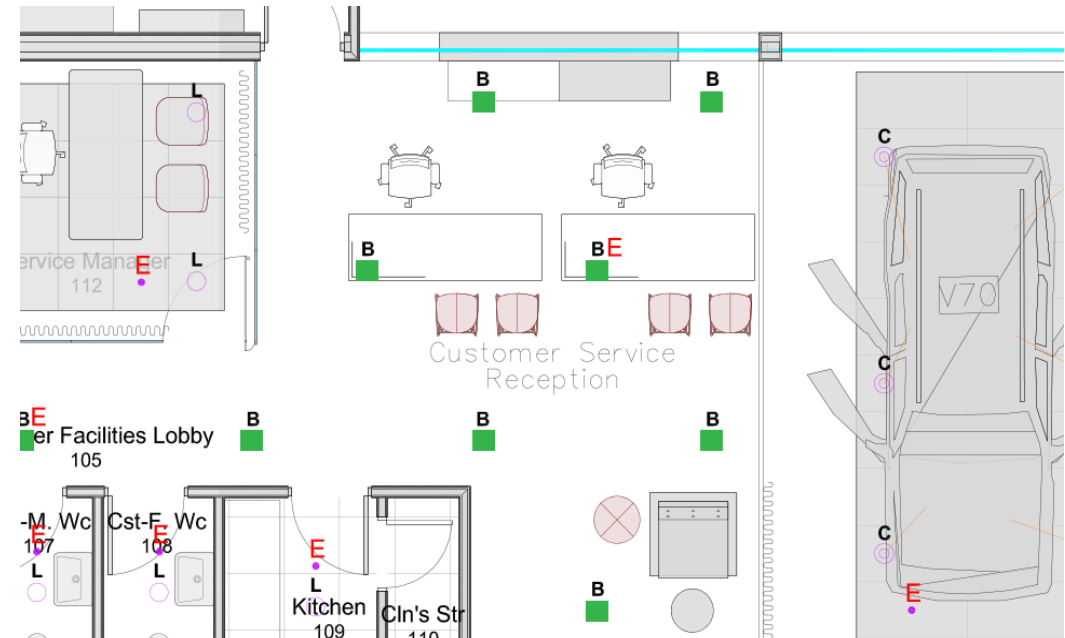
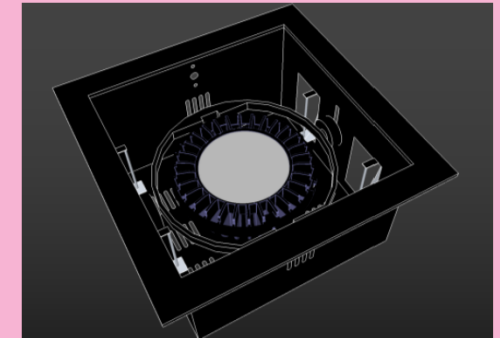


Service Reception- Design Parameters

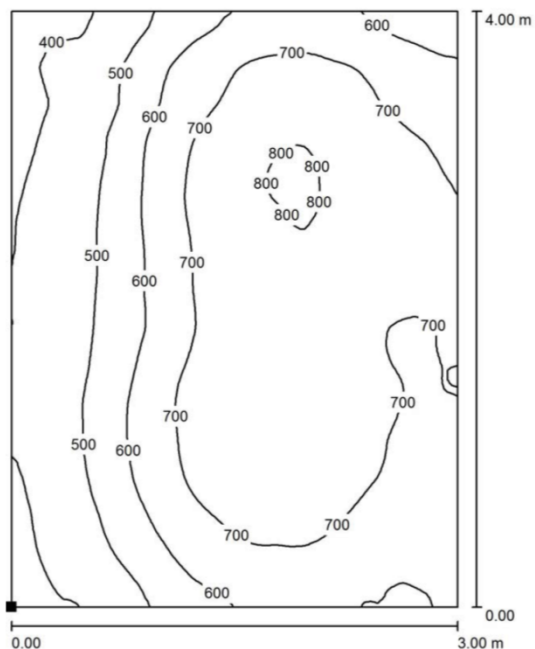
- Level of illumination to be 500 lux at desk height.
- Colour Temperature to be 3000K.
- Fittings to be recessed in wooden slated ceiling.



Special manufacture for Volvo specialist wooden slated ceiling.
44W LED, 3000K, 40° beam,
Lumen output 4100 lm,



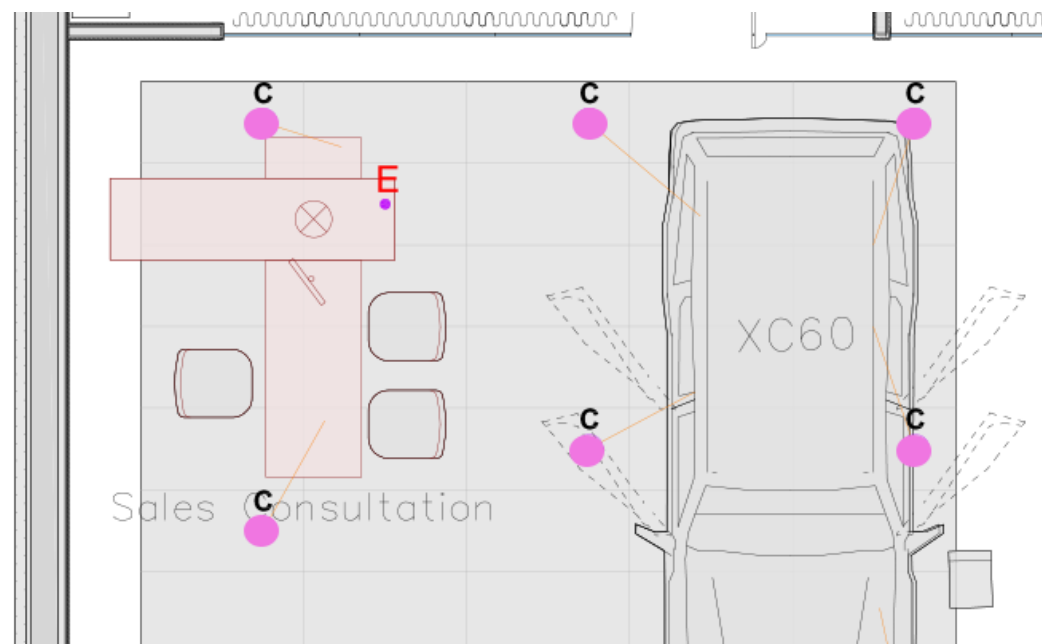
The Living Room- Service Reception **Artemide**



Sale Desk- Design Parameters

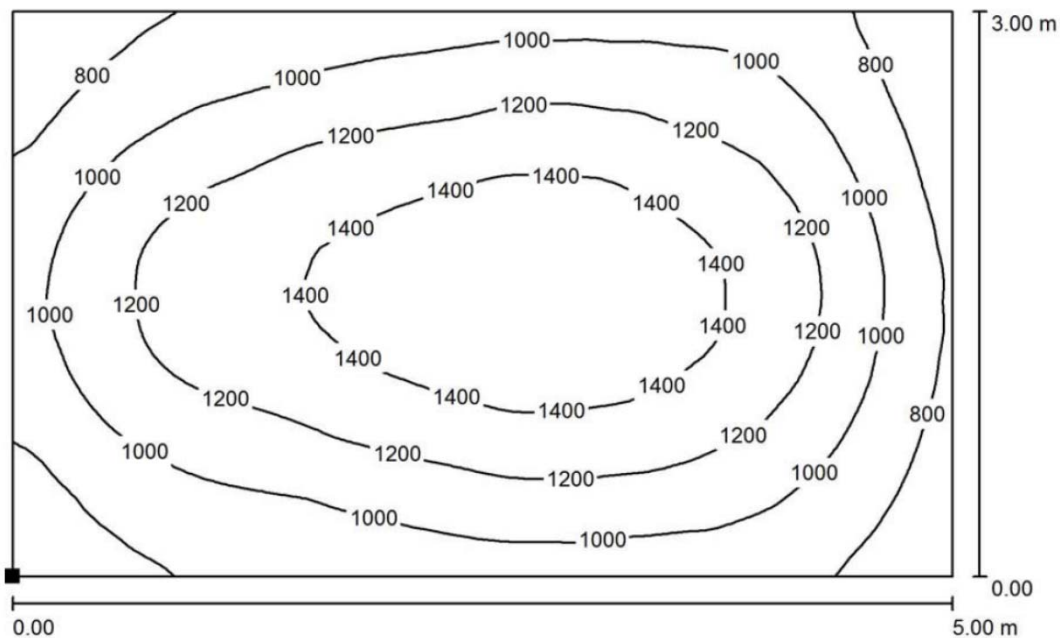
- Level of illumination to be 500 lux at desk height.
- Colour Temperature to be 4000K- 4,200K.
- Fittings to be generally recessed circular downlights with white bezel, max 240mm diameter.

GBZ0139LED adjustable downlight
4000K, 28° beam
43W, 4600lm



The Street- Sales Desk

Artemide

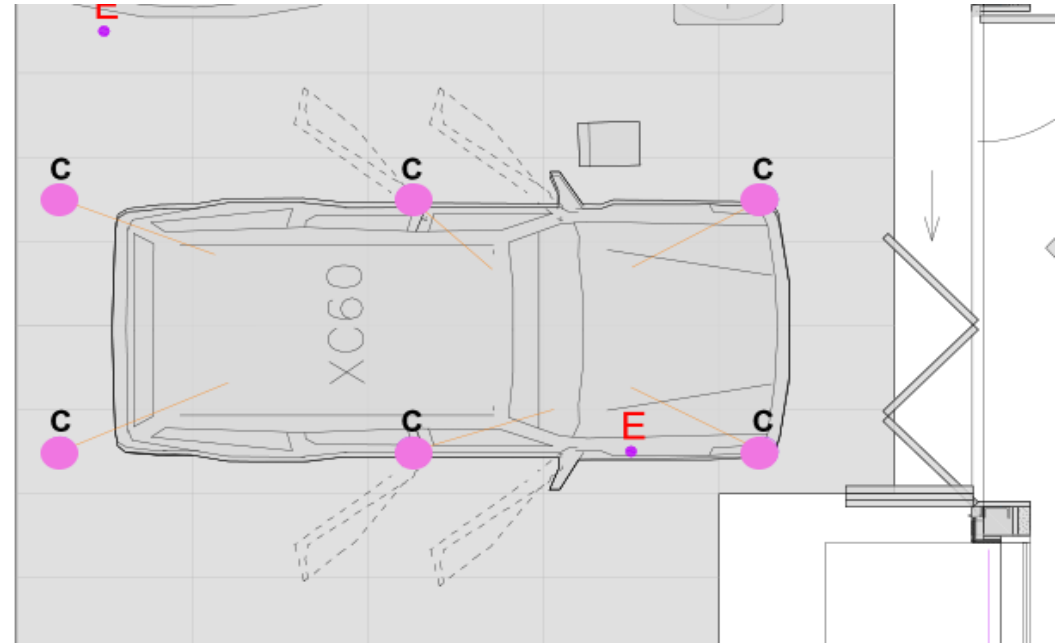


Car Display- Design Parameters

- Allow 4/6 spotlights per vehicle to provide an average level of illumination of not less than 1200 lux on the vehicle as measured at 850mm above finished floor level.
- The lighting shall be designed to give a rapid drop off in the level of illumination immediately adjacent to the vehicles.
- Fittings generally circular downlight, max 240mm diameter with white colour bezel.
- Colour temperature shall be 4,000-4,200K



GBZ0139LED adjustable downlight
4000K, 28° beam
43W, 4600lm



The Street- Car Display

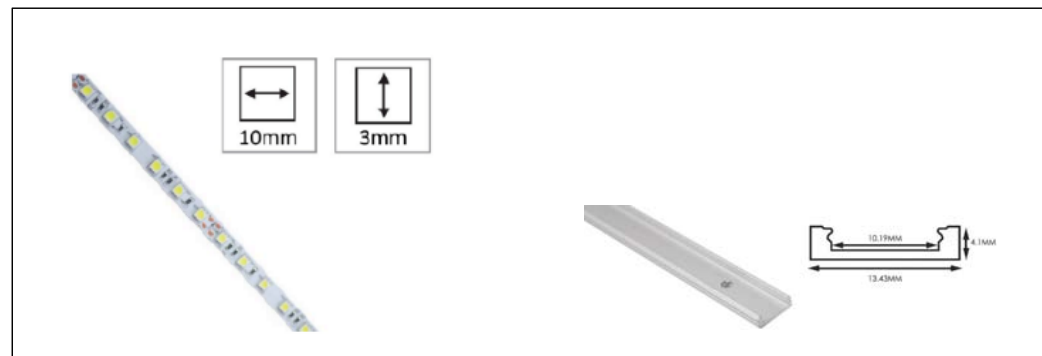
Artemide

High level widow option

LED tape mounted on suitable bracket on the bulkhead to illuminate its vertical face

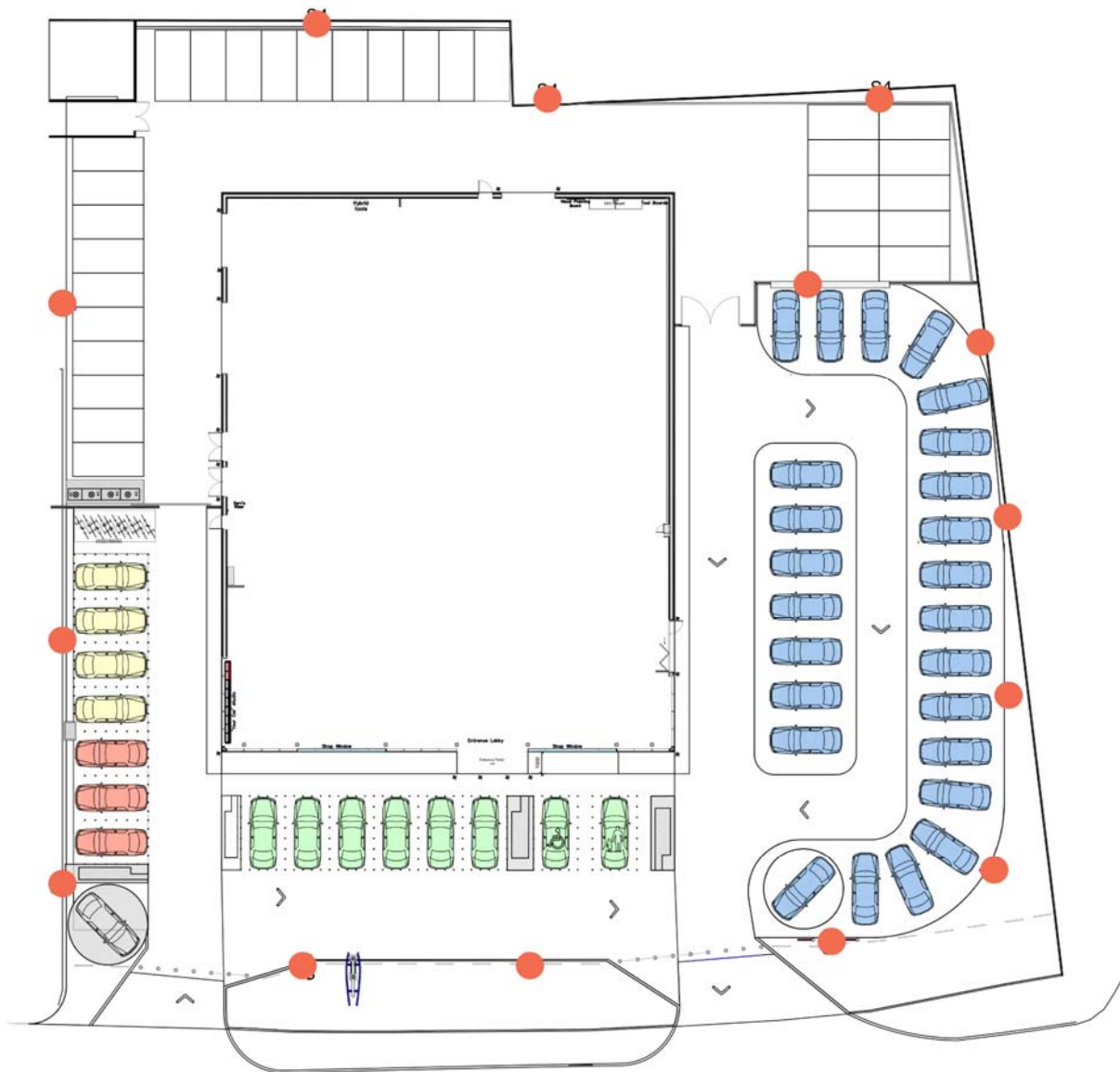
- At request of client / engineer
- Colour temperature shall be 4,000K

GBE5173 LED TAPE
4000K, 12W / M - 100lm / W

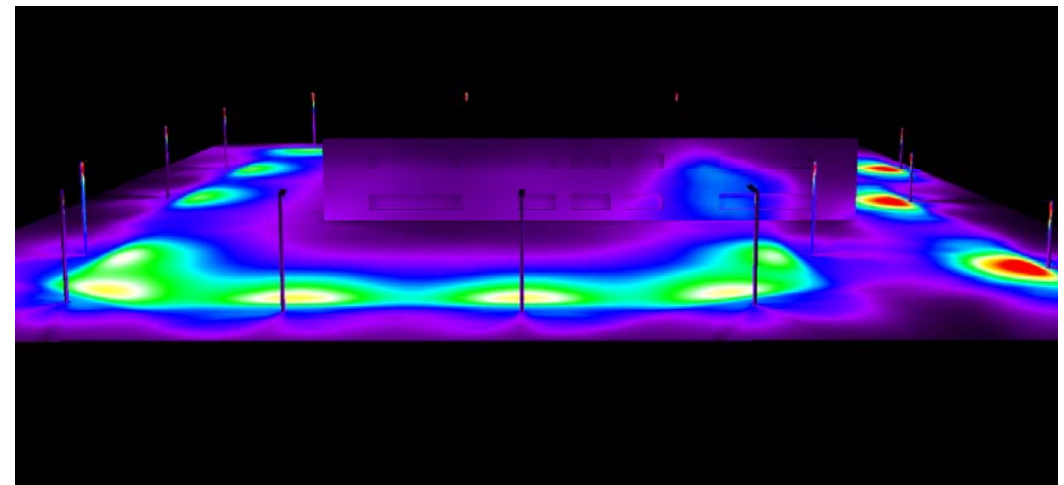
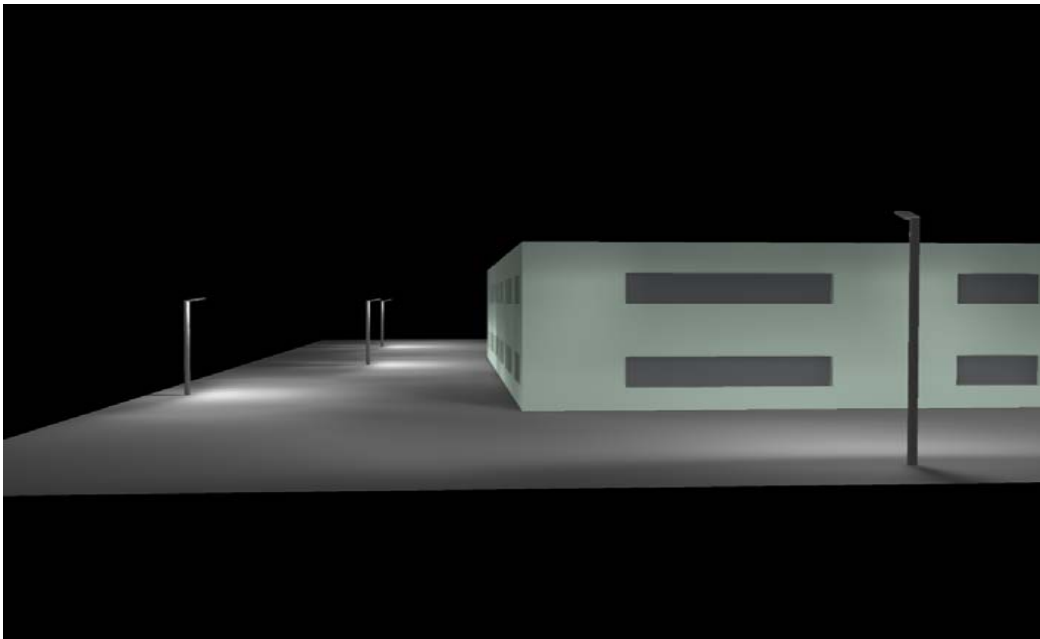
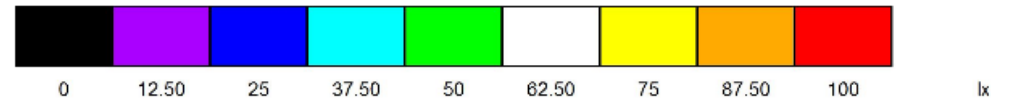
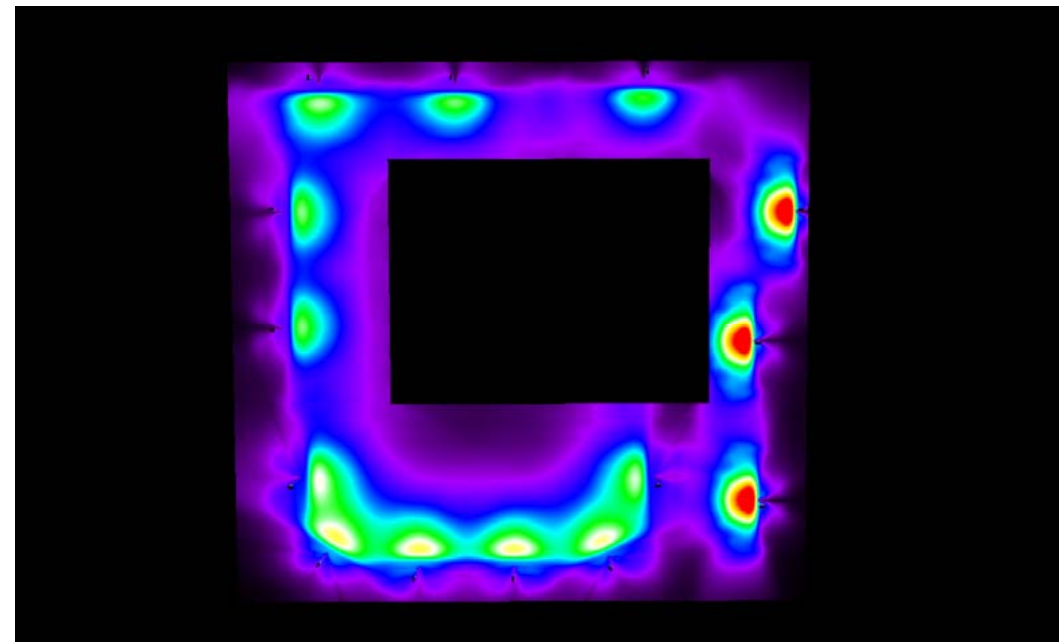
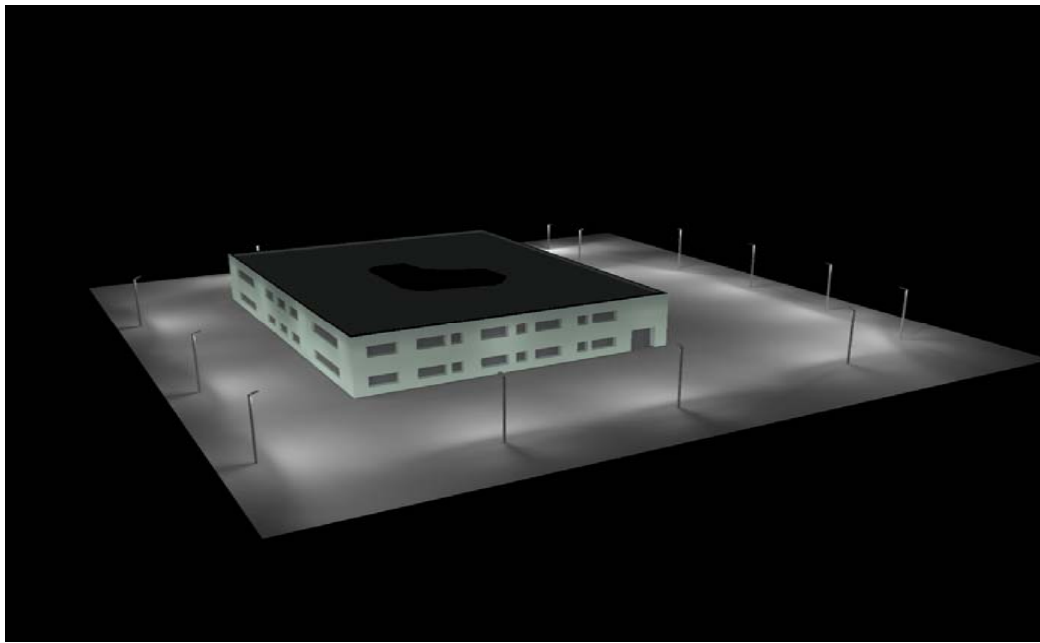


The Street- High level window

Artemide



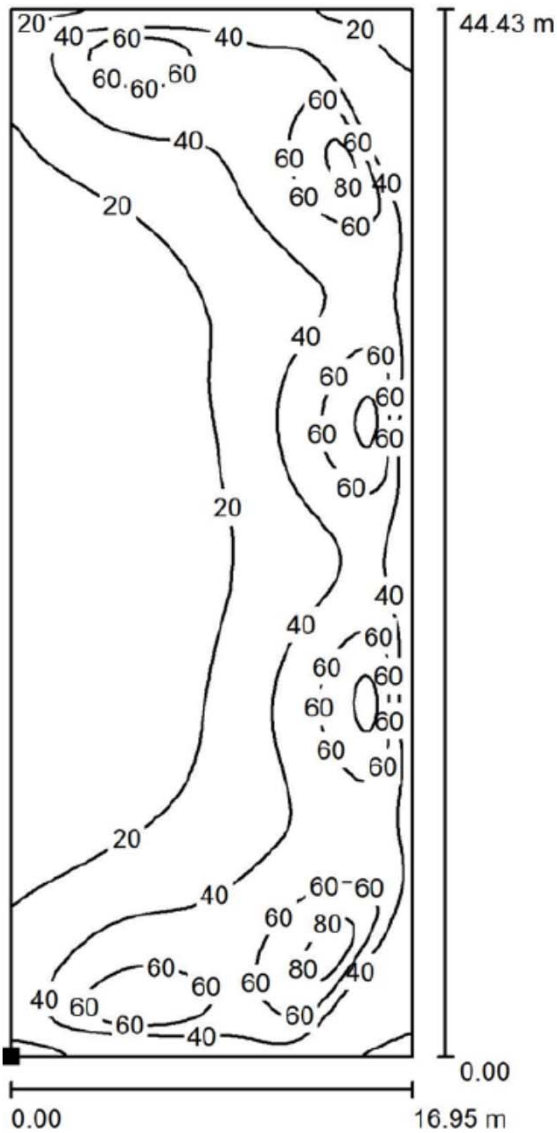
● T4183ELN00 Sostituto pole mounted
105W LED 4000K 7523lm



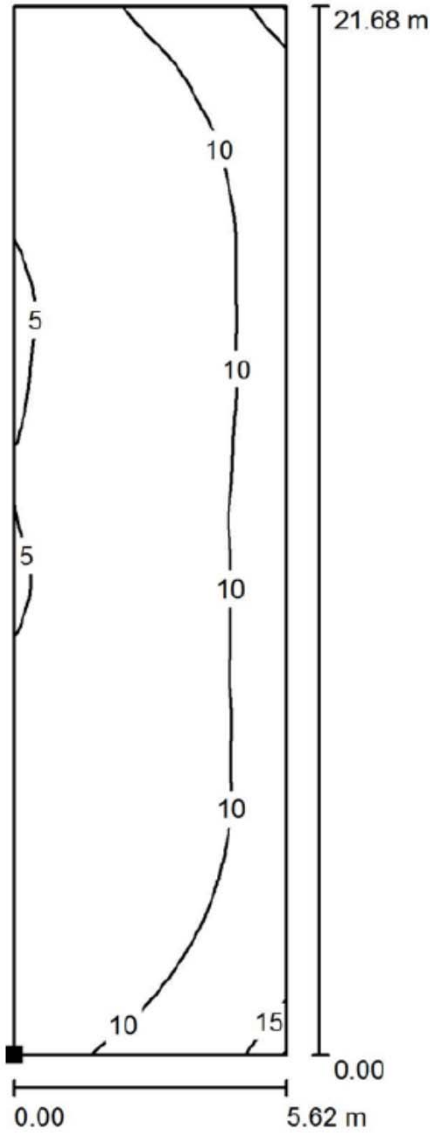
Exterior Calcs Overview

Artemide

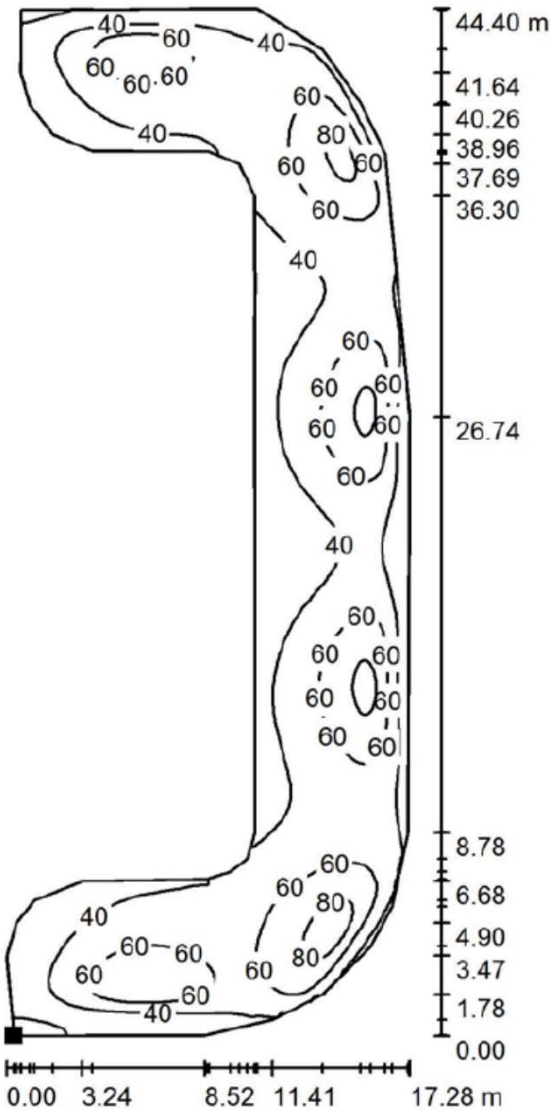
Complete Car Display Area



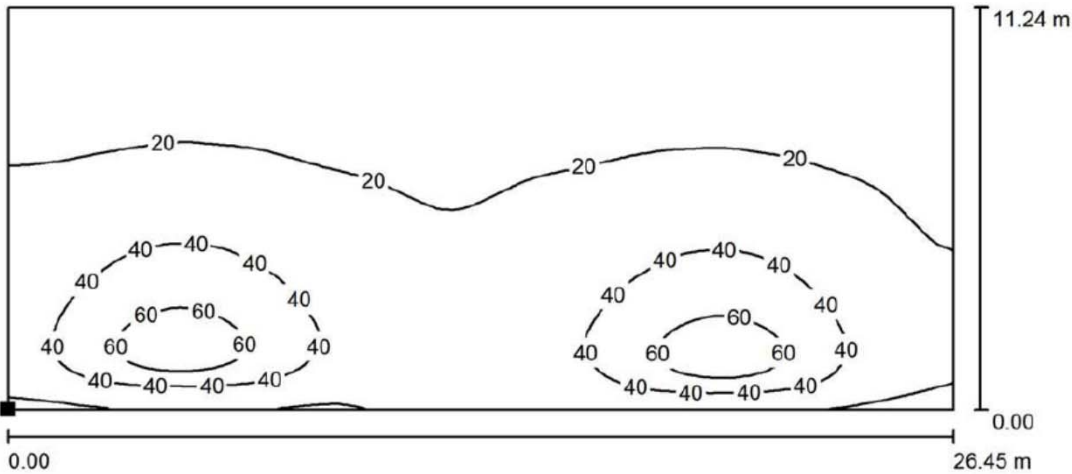
Car Display Area 2



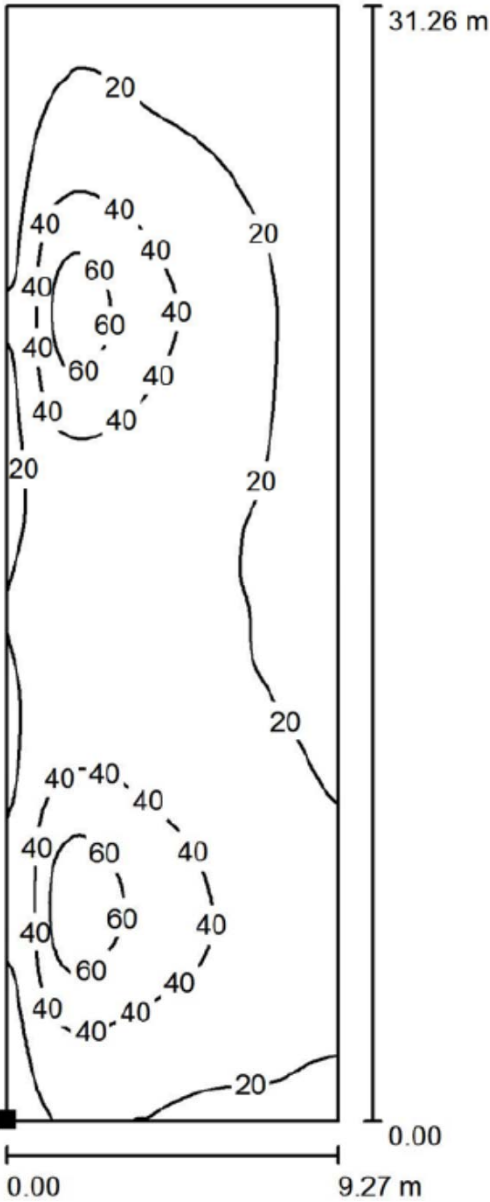
Car Display 1



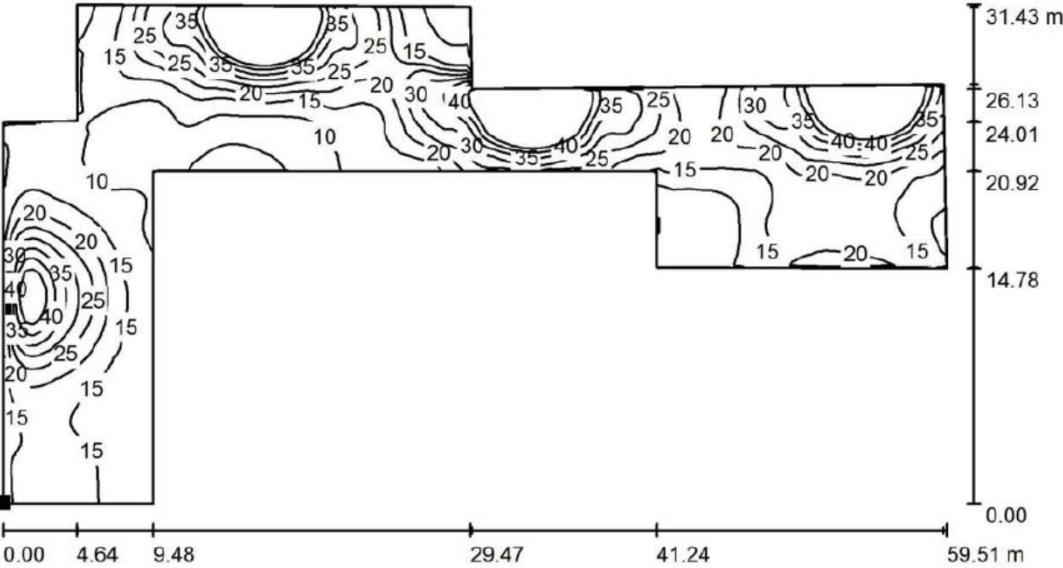
Customer Parking



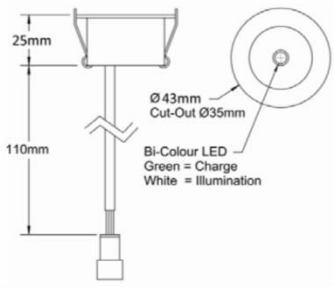
Service Parking



Back of House



GBE5002 (E4448) 3W LED



Battery	1.8Ah 4 Cell 4.8v Ni-CD
Trickle Charge Current	100ma
Load	3w Flux LED
Output Current	500 ma
Light Output	100%
Emergency Duration	3 hours
Discharge Current	1100mA
Cut Off Voltage	3.0v
Recharge Period	24 Hours
Tc Max Case Temp.	70°C Module / 50°C Battery
Supply voltage	230/240v 50/60Hz
Operation Mode	Non Maintained
Lumen Output	170 Lumen (Minimum)
Beam Angle	120°
Colour Temperature	>6500K
Driver Dimensions	Dia: 30mm x L 150mm

Mounting	To	Between
Height	Wall	Fittings
2.5m	3.8	8.1
3.0m	4.4	9.3
4.0m	5.3	11.6
5.0m	6.1	13.7
6.0m	6.2	15.5



GBZ0139 LED ADJUSTABLE DOWNLIGHT

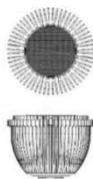


FEATURES

Supplied with colour 840, 4000k LED'S as standard. Options are available from 3000k and 40 degree beam. All LED data and performance data is taken at an ambient temperature of +25 degrees Celsius

LIGHT ENGINE

*No of LED - 12
Approvals - CE, RoHS, WEEE
CRI - 84 (90 on request)
Forward Voltage - 42V
Constant current device
Expected Lifetime - 100,000 hours*



GBZ0139

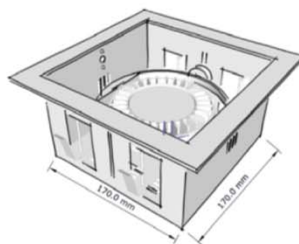
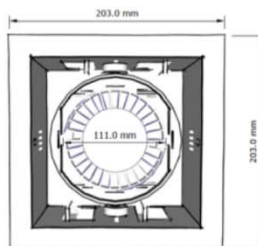
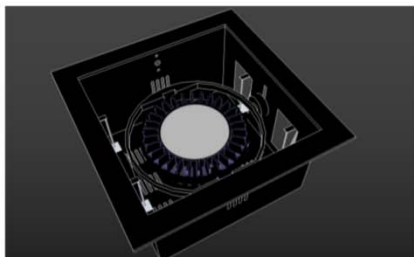
*Power - 43W
Field angle - 28°
Lumen output - 4100Lm
Efficacy - 95Lm/W*

DIMENSIONS

*Cutout – 144mm
Recess depth – 120mm
Diameter – 155mm*



GBZ0165 VOLVO LED DOWNLIGHT



FEATURES

Special manufacture for Volvo specialist wooden slated ceiling.

All LED data and performance data is taken at an ambient temperature of +25 degrees Celsius

LIGHT ENGINE

3000K

No of LED - 12

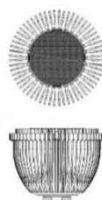
Approvals - CE, RoHS, WEEE

CRI - 84 (90 on request)

Forward Voltage - 42V

Constant current device

Expected Lifetime - 100,000 hours



Power - 44W

Field angle - 40°

Lumen output - 4100Lm

Efficacy - 93Lm/W



Product Specification

Artemide

M244020 Luceri LED Trim - LED faceted mirror optics 26W 3000K - White

MATERIALS:

DESCRIPTION:

Luceri LED and Kadro LED offer a modular range of professional downlighters, highly flexible, providing customisable lighting solutions for every need. Thanks to TrueWhite technology, colour temperature and colour rendering index are maintained constant throughout the lifespan of this product, guaranteeing a consistent light quality. The emission of versions with metal reflector is compliant with EN12464 and has UGR

FEATURES

Product name: M244020 Luceri LED Trim - LED faceted mirror optics 26W 3000K - White

Article Code: M244020

Colour: White

Series: Architectural

Area contract: Hospitality Hotel, Other, Office

DIMENSIONS

Width: cm 17.6

Height: cm 21

Diameter: cm 24.3

Cutout diameter: cm 23

Cutout shape: Rounded

Weight: kg 1.5

LAMPS INCLUDED

Category: LED

Number: 1

Watt: 22W

Color temperature (K):3000K

Class: A

LUMINAIR

Watt: 26.0W

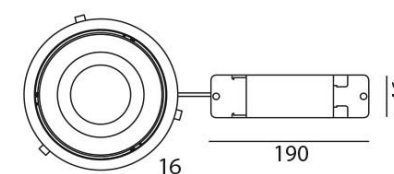
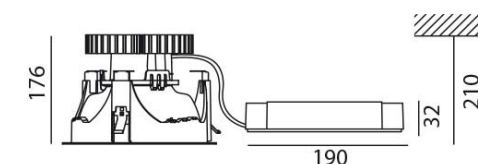
Luminous Flux (lm):1980lm

CCT: 3000K

Efficiency: 100%

Efficacy: 76.15lm/W

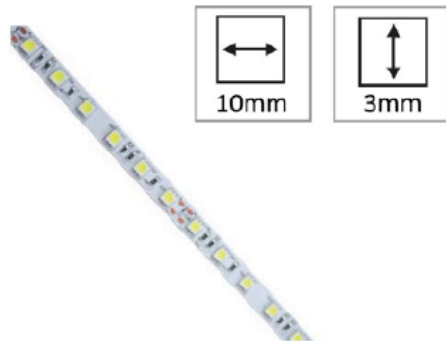
CRI: 0



Frame (ext) Ø243
Frame (int) Ø211
Reflector (ext) Ø200



GBE5173 Surface mounted high output LED strip 12W



FEATURES

Power - 12W

Lumen output - 1210Lm

Efficacy - 100Lm/W

Dimensions: (L) 5000mm (W) 10mm

Can be cut every 100mm

IP20 rated

Colour Temperature 4000k LED

Beam angle 120°

Lamp life: 50 000 hours

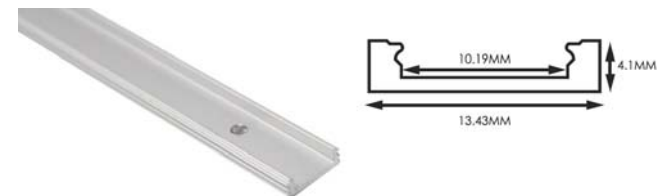
CRI 80

For use with a 24v DC Constant Voltage

LED Driver only

All LED data and performance data is
taken at an ambient temperature of +25
degrees Celsius

HEATSINK



Sostituto Pole

MATERIALS:

DESCRIPTION:

Light fixture with direct emission, with monochromatic LED light sources. Pole installation (pole not supplied). Consists of lighting unit and 90° adjustable pole joint. Die-cast EN-AB 47100 aluminium lighting unit with 3-stage outdoor treatment: nanotechnologies, antioxidant primer, polyester paint. Asymmetrical high-efficiency PMMA optical units. High-transparency shock-resistant polycarbonate screens. Composed by 3 interchangeable optical units. AISI 316 fixing screws and silicone gaskets. Suitable for ME3a and ME4a road lighting. Technical features in compliance with EN60598-1-2-3. Protection level from 4KV impulse overvoltage. IP Rating IP66. ENEC approved. Insulation class II.

FEATURES

Product name: Sostituto Pole
Article Code: T4183ELN00
Colour: Grey antracite
Series: Outdoor

DIMENSIONS

Length: cm 60.8
Width: cm 32
Height: cm 600
Impact Resistance: IK10
Glow Wire Test: 750 °

LAMPS INCLUDED

Category: LED
Number: 1
Watt: 105W
Color temperature (K): 4000K
Class: A

LUMINAIR

Watt: 105W
Voltage: 220V-240 V
Luminous Flux (lm): 7609lm
CCT: 4000K

